

# 29er EUROCUP

Sant Andreu de Llavaneres, 15<sup>th</sup> to 19<sup>th</sup> of February 2017

The Organising Authority is Club Nàutic El Balís in conjunction with 29er Class Association and Catalan Sailing Federation (FCV).

## SAILING INSTRUCTIONS

### 1 RULES

- 1.1 The regatta will be governed by the rules as defined in The Racing Rules of Sailing (RRS-2017-2020).
- 1.2 RSS Appendix P, Special Procedures for Rule 42, will apply.

### 2 NOTICES TO COMPETITORS

- 2.1 Notices to competitors will be posted on the Official Notice Board (ONB), located next to the Race Office.

### 3 CHANGES TO SAILING INSTRUCTIONS

- 3.1 Any change to the Sailing Instructions will be posted on the Official Notice Board at least 30 minutes before flag D had been hoisted for this day, except that any change to the schedule of races will be posted by 20:00hrs of the day before it will take effect.

### 4 SIGNALS MADE ASHORE

- 4.1 Flag D with one sound means "The warning signal will be made not less than 30 minutes after this flag is displayed. Boats are not allowed to leave the boats parking area until this signal is made".

### 5 FORMAT OF RACING

The regatta will consist of a qualifying and final series.

#### 5.1 Qualifying series:

- 5.1.1 Two Qualifying Series days are scheduled. If at the end of the Friday 16<sup>th</sup> a minimum of 4 valid races are not completed, No Final Series will be sailed.
- 5.1.2 No Qualifying and Final Series will be sailed on the same day.
- 5.1.3 Boats will be assigned to fleets Yellow and Blue. Initial assignment will be made by the Organizing Committee from the official entry list. Initial assignments will be posted by 2 hours before the first race. The allocation will not be grounds for redress
- 5.1.4 Boats will be reassigned to fleets after each day of racing if at least one race has been completed these day. If all fleets have completed the same number of races, boats will be reassigned on the basis of their ranks in the series. If all fleets have not completed the same number of races, the series scores for reassignment will be calculated for those races, numbered in order of completion, completed by all fleets.
- 5.1.5 Reassignments will be made as follows: 1st Yellow - 2nd Blue - 3rd Blue - 4th yellow - 5th yellow - 6th blue, and so on...
- 5.1.6 Reassignments will be based on the ranking available at 2000hrs that day, regardless of protests or requests for redress not yet decided.
- 5.1.7 If all fleets have not completed the same number of races by the end of a day, the fleets with fewer races will continue racing the following day until all fleets have completed the same number of races. All boats will thereafter race in the new fleets.

#### 5.2 If Final Series:

- 5.2.1 Boats will be assigned to Gold and Silver Final Series fleets, on the basis of their ranks in the Qualifying Series. The Final Series fleets will have equal size (Gold fleet will have one boat more in case of total entries was odd). Boats in the Gold fleet will race as yellow group and boats in the Silver fleet will race as blue group.
- 5.2.2 Any recalculation of Qualifying Series ranking after boats have been assigned to Final Series fleets will not affect the assignments except that a redress decision may promote a boat to a higher fleet.

#### 5.3. Identification of groups:

- 5.3.1. At registration, each competitor will receive two ribbons, one yellow and one blue. While racing competitors will fly from the masthead the colour ribbon according to their assigned daily group/fleet. Competitors will retain both ribbons for the duration of the regatta. Replacements will be provided in the event of loss at cots of 5.-€, except under a reasonable justification.
- 5.3.2. In case of SI 5.1.7 boats will be identified by the colour ribbon of the new day.

### 6 SCHEDULE OF RACES

- 6.1 From Thursday 16<sup>th</sup> to Sunday 19<sup>th</sup>, the warning signal for the first race of the day will be at 11:30 hrs.
- 6.2 There are a maximum of 16 races scheduled.
- 6.3 There will not be made more than five (5) races per day (This modifies NoR. 5.5).
- 6.4 On the last day of racing no warning signal will be made after 15:30h, except as a consequence of a general recall.

## 7 CLASS FLAGS

7.1 Regarding RRS 26, warning signal flags will be the class flag (29er class insignia on white background) over a coloured group flag as follows: “Yellow” and “Gold” groups – yellow flag; “Blue” and “Silver” groups – blue flag

## 8 RACING AREA

8.1 Attachment “A” shows the location of the racing area.

## 9 THE COURSE

9.1 Attachment “B” shows the course, the order in which marks are to be passed, and the side on which each mark is to be left.

9.2 No later than the warning signal, the race committee signal boat will display the approximate compass bearing of the first leg.

9.3 If for any reason any of the buoys of the Mark 2 (gate) is not in place, the remaining mark shall be left to port.

## 10 MARKS

Course marks:	Inflatable yellow cylindrical buoy.
Starting marks:	Race Committee boats with red flag.
Finishing marks:	Race Committee boat with red flag and buoy with blue flag.
Changing mark:	Inflatable red conic buoys.

## 11 THE START

11.1 The starting line will be between masts showing a red flag at the Race Committee boats.

11.2 To alert sailors that a new sequence of starts is soon to begin, the RED flag defined at SI 11.1 will be displayed for at least 5 minutes before the first warning signal of the first start of the sequence.

11.3. A boat starting later than four minutes after her starting signal will be scored Did Not Start (DNS) without a hearing. This changes rules A4 and A5.

## 12 CHANGE OF THE NEXT LEG OF THE COURSE

12.1 To change the next leg of the course, the race committee will lay a new mark (or move the finishing line) and remove the original mark as soon as practicable according to RRS 33.

12.2 When a change of course is signaled, a new “mark 1” will not have an associated “offset mark”.

## 13 THE FINISH

13.1 The finishing line will be between the mast showing a red flag at the race committee boat at the starboard-end and a staff displaying a blue flag on the finishing mark at the port-end.

## 14 PENALTY SYSTEM

14.1 Rule 44.1 and P2.1 is changed so that the Two-Turns Penalty is replaced by the One-Turn Penalty.

## 15 TIME LIMITS AND TARGET TIMES

15.1 The time limit is 50 minutes. The target time is 30 minutes. Failure to meet the target time will not be grounds for redress. This changes rule 62.1(a).

15.2 Boats failing to finish within 10 minutes after the first boat from its correspondent fleet that had complied with “start” definition, sailed the course and finished, will be scored Did Not Finish without a hearing. This changes RRS 35, A4 and A5.

## 16 PROTESTS AND REQUESTS FOR REDRESS

16.1 Protest forms are available at the Race Office.

16.2 Protests and requests for redress or reopening shall be delivered there within the appropriate time limit.

16.3 The protest time limit is 60 minutes after the last boat has finished the last race of the day or the race committee signals “no more racing today”, whichever is later.

16.4 Notices to inform competitors of hearings, in which they are parties or named as witnesses, will be posted no later than 30 minutes after the protest time limit. Hearings will be held in the protest room located at the first floor of the blue building, next to the Race Office.

16.5 Failure to follow the instructions 4, 5.5, 18, 19 and 20 shall not be grounds for a protest by a boat. This changes rule 60.1 (a). Penalties for these breaches may be less than disqualification if the protest committee so decides. The scoring abbreviation for a discretionary penalty imposed is DPI.

16.6 A request for reopening a hearing shall be delivered within the protest time limit for a next day. Except the last schedule day of racing it shall be delivered no later than 30 minutes after the requesting party was informed of decision on that day. This change rule 66 RRS.

## 17 SCORING

- 17.1 Three (3) qualifying races are required to be completed by all fleets to constitute a regatta.
- 17.2 If at the end of the last qualifying racing day some boats have more race scores than others, scores for the most recent races will be excluded so that all boats have the same number of race scores.
- 17.3 For qualifying series RRS A4.2 is changed so that the scores are based on the number of boats assigned to the largest fleet.
- 17.4 Each final series fleet will be scored separately. Different final series fleets need not have completed the same number of final races. The boats in the Gold fleet will be ranked highest, following by the Silver fleet boats.
- 17.5 A boat's regatta score will be the total of her race scores, except:
- 17.5.1. When from 5 to 8 races have been completed, a boat's series score will be the total of race scores excluding her worst score.
  - 17.4.2. When 9 or more races have been completed, a boat's series score will be the total of her race scores excluding her 2 worst scores.
- 17.6 Only 1 final race can be discarded.
- 17.7 If only 1 final race has been completed, this final race will not be able discarded.
- 17.8 To request correction of an alleged error in the published results list or series, a boat can fill out a request for review of results available in the race office.

## 18 SAFETY REGULATIONS

- 18.1 Check-Out and Check-In: The form of firm control will be next to the signal mast. Before go to the water and on arrival to the harbour will have form of firm control should sign must personally sign one of the crew. In case of failure of a competitor, the Protest Committee may apply a discretionary penalty (DPI).
- 18.2 A boat that retires shall notify the race committee or the race office as soon as possible.

## 19 SUPPORT PERSON BOATS

- 19.1 *Support person* boats shall stay outside the area of the course from the time of the preparatory signal until all boats have finished or until the race committee signals a postponement, general recall or abandonment.

## 20 TRASH DISPOSALS

- 20.1 Trash may be placed aboard the Race Committee boats or any other organization boats. *Support person* boats shall help with this instruction, even if the participant does not belong to their respective teams.

## 21 COMMUNICATIONS

- 21.1 Except in an emergency, no vessel made radio transmissions while racing nor receive radio communications not for all boats. This restriction also applies to any communication equipment.

## 22 DISCLAIMER OF LIABILITY

- 22.1 Competitors participate in the regatta entirely at their own risk. See RRS gives 4, Decision to Race. The organizing authority will not accept any liability for material damage or personal injury or death linked, occurred before, during or after the regatta.

## 23 INSURANCE

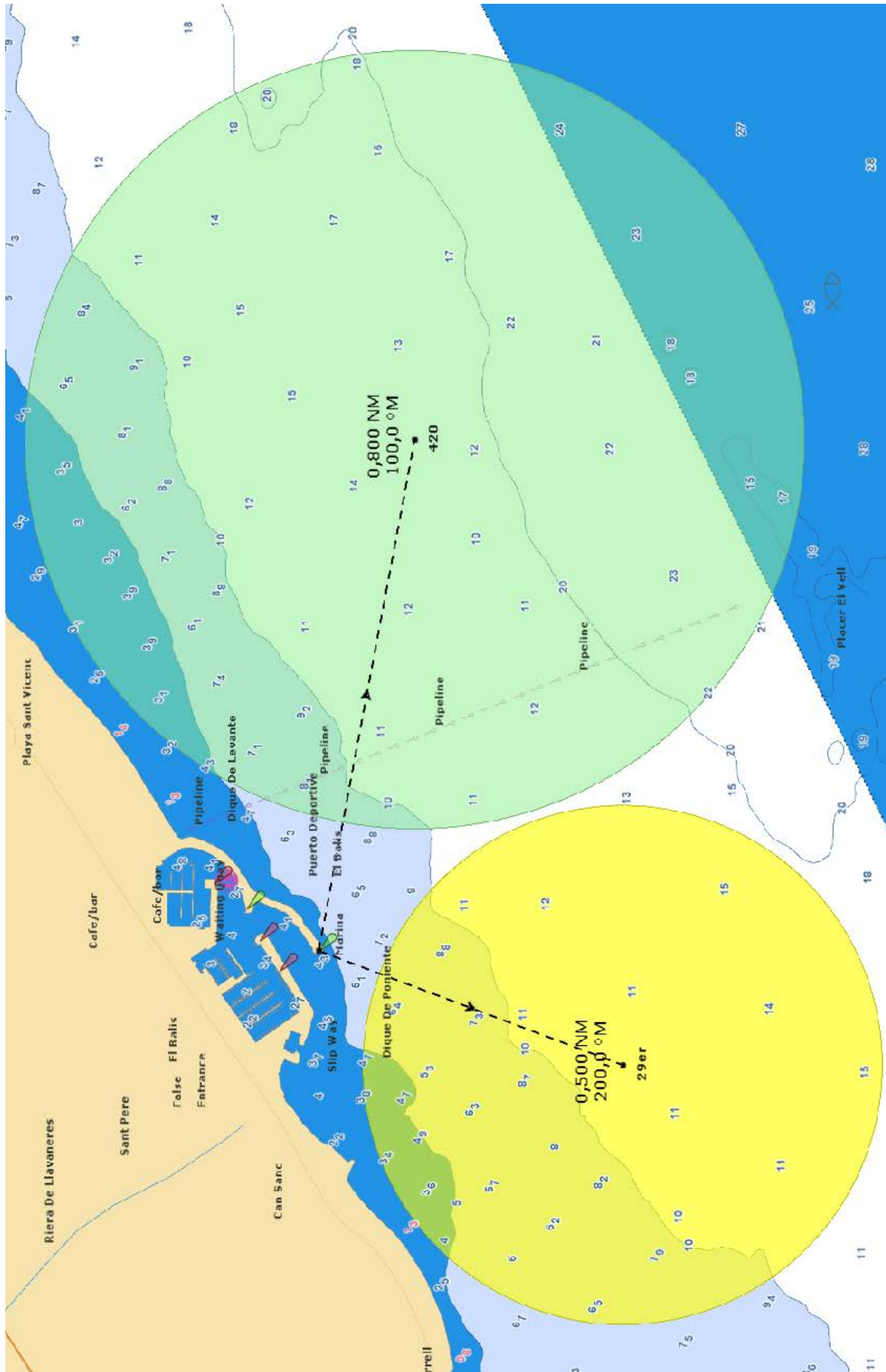
- 23.1 All participants shall have third party insurance coverage with a minimum of €2.000.000.- for the event (or the equivalent in any other currency).

## 24 REPLACEMENTS

- 24.1 Replacement of Helm, Crew or equipment shall require a prior approval of the PRO. Request for replacement shall be made at the first reasonable opportunity. Radio transitions on water or verbal requests will be accepted.

Sant Andreu de Llavaneres, 10<sup>th</sup> February 2017

# ATTACHMENT "A" - RACE AREA



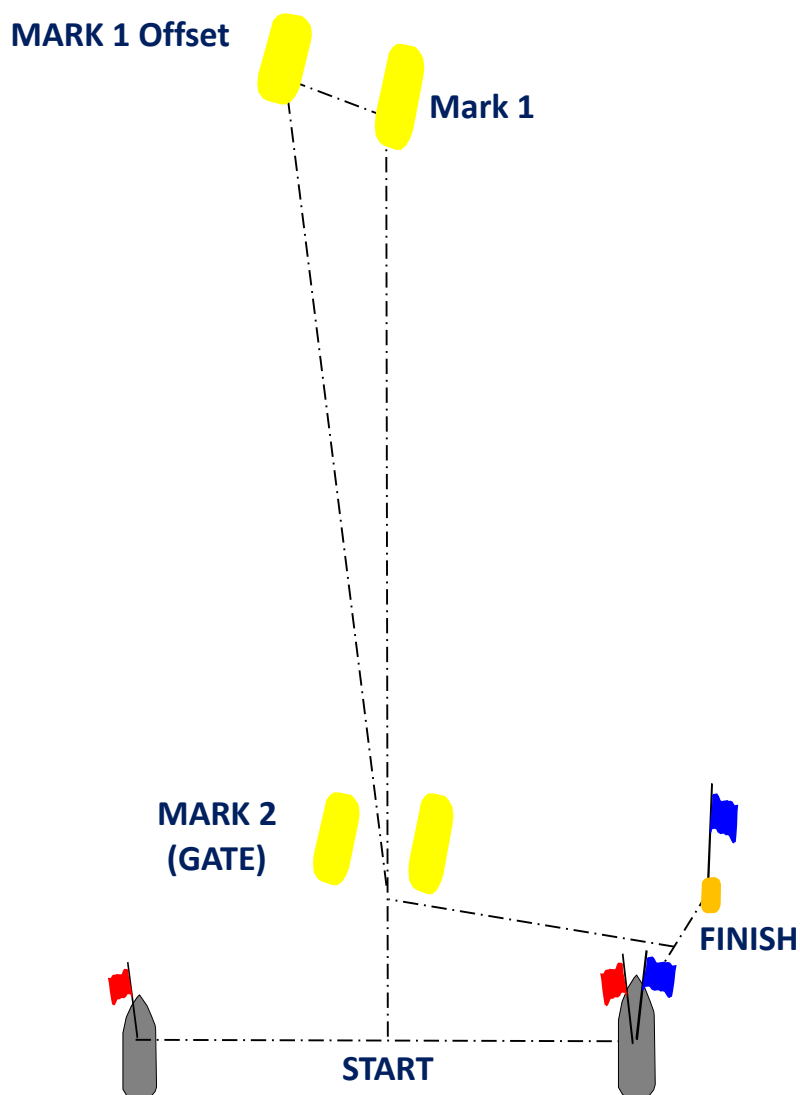
## ATTACHMENT “B” - COURSE

Course:

Start – mark 1 – mark 1 Offset – mark 2 (gate) – mark 1 – mark 1 Offset – mark 2 (gate) – Finish

Mark 1 and 1 Offset have to be left to port

Mark 2 is a “gate”



Reminder:

S.I. 9.3. If for any reason any of the buoys of the Mark 2 (gate) is not in place, the remaining mark shall be left to port.  
S.I. 12.2. When a change of course is signaled, the new mark 1 will not have an associated offset mark.